

## *EMC.ReportServer*

# Distribute and create reports centrally and automatically

The EMC.ReportServer allows you to **create and save reports automatically and distribute them to specific users**. Thanks to **centralized management, automatic creation and distribution**, all recipients have access to the same figures and evaluations based on the collected real-time data in a timely and secure manner. This forms the optimal basis for effective performance evaluation and improved decision-making.

## *Status Quo*

Everyone has their own list  
and their own evaluation



## *EMC.ReportServer*

# Automatically send relevant evaluations to the to the right recipients

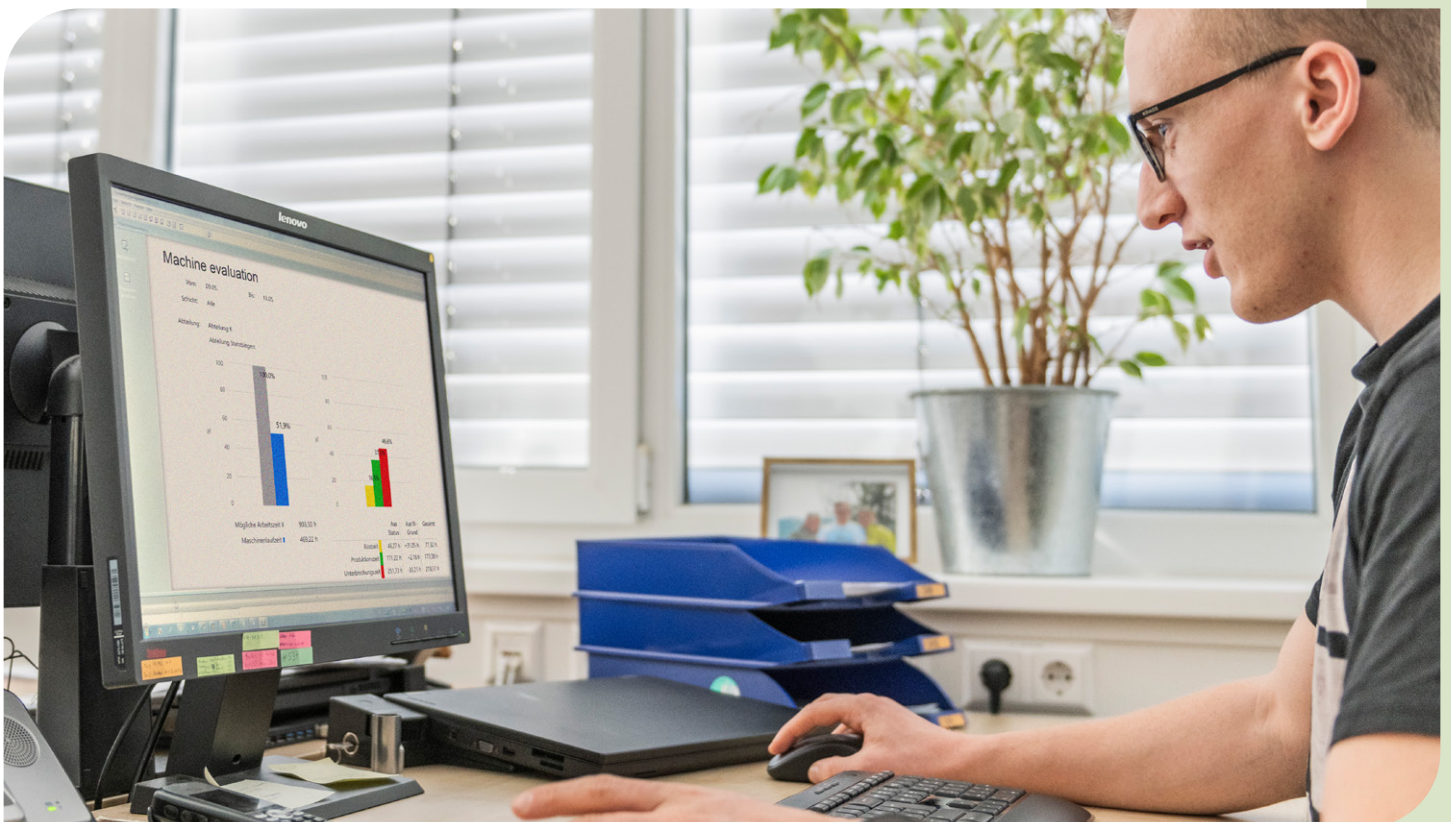


The **EMC.ReportServer module** significantly simplifies reporting in your company. It offers an efficient way of **automatically creating and saving reports and distributing them in various formats for specific target groups.**

This means that **reports no longer have to be created individually and manually.** The latest figures and evaluations are always sent to exactly those recipients who need them **according to a defined schedule.**

In addition, all reports can be **individually compiled and visualized in edit mode.**

The ReportServer offers **considerable advantages in terms of central administration, automation, data security, scalability and cost efficiency.** This provides the optimal basis for an **effective and uniform performance evaluation** of your company.

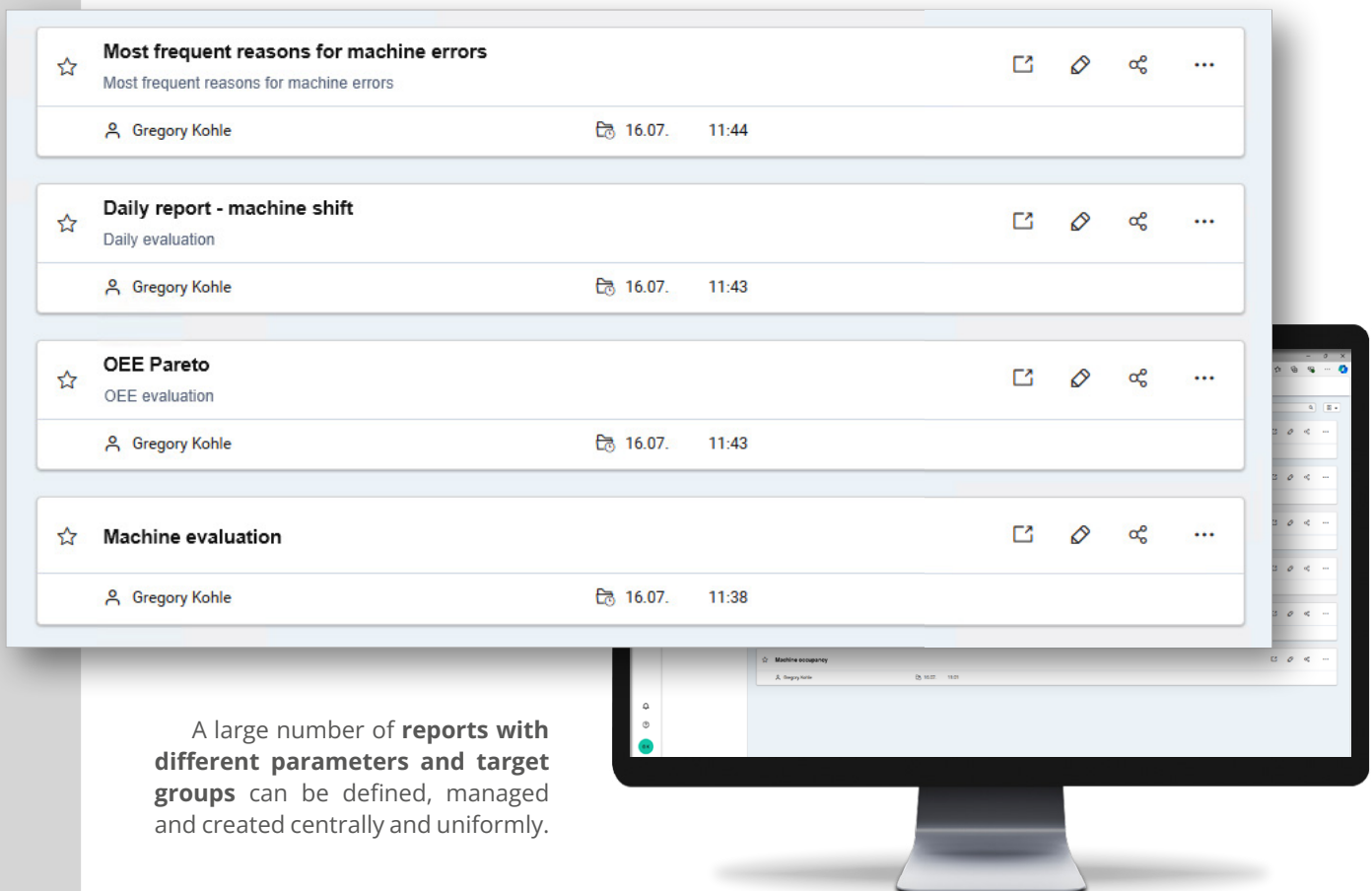


## *EMC.ReportServer*

# Central management and automated distribution of reports



The **EMC.ReportServer module** offers you an **efficient way to create, save and distribute reports to employees or departments**. Automated creation and distribution **reduces manual effort and ensures consistent and up-to-date reporting**. Access to current and accurate data **enables well-founded decisions to be made in real time**.



The screenshot displays a user interface for managing reports. It features a list of reports on a monitor, with a tablet showing a detailed view of a report. The reports listed are:

- Most frequent reasons for machine errors**  
Most frequent reasons for machine errors  
Gregory Kohle | 16.07. | 11:44
- Daily report - machine shift**  
Daily evaluation  
Gregory Kohle | 16.07. | 11:43
- OEE Pareto**  
OEE evaluation  
Gregory Kohle | 16.07. | 11:43
- Machine evaluation**  
Gregory Kohle | 16.07. | 11:38

The interface includes icons for favorite, share, edit, and delete for each report. The tablet shows a detailed view of a report titled "Machine occupancy" by Gregory Kohle, dated 16.07. 11:38.

A large number of **reports with different parameters and target groups** can be defined, managed and created centrally and uniformly.

## Define parameters

The **report parameter values** that were defined for reports in the EMC.Reporting module are **predefined here with the same parameters**.

They determine **the data and content of the selected departments or machines** with which the reports are to be sent.

Start date	<input type="text" value="Select date"/>	<input checked="" type="checkbox"/> Use the standard
End date	<input type="text" value="Select date"/>	<input checked="" type="checkbox"/> Use the standard
Divisions	<input type="text" value="Punching division 1, Punching division 2, ..."/>	<input type="checkbox"/> Use the standard
Subdivisions	<input type="button" value="Delete all"/> <ul style="list-style-type: none"> <li><input checked="" type="checkbox"/> Punching division 1</li> <li><input checked="" type="checkbox"/> Punching division 2</li> <li><input checked="" type="checkbox"/> Punch bending division</li> <li><input checked="" type="checkbox"/> Division winning</li> <li><input checked="" type="checkbox"/> Winch division</li> </ul>	<input type="checkbox"/> Use the standard
Machines		<input type="checkbox"/> Use the standard
Shifts		<input type="checkbox"/> Use the standard
Quantities		<input type="checkbox"/> Use the standard
Model orders in OEE	<input type="text" value="No"/>	<input type="checkbox"/> Use the standard
Interruption reasons	<input type="text" value="By sorting order"/>	<input type="checkbox"/> Use the standard

## Planning the distribution

Decide for yourself in which **cycle or repetition interval** your reports are automatically created and sent.

Type	<input type="text" value="Daily"/>
Repeated	<input checked="" type="radio"/> Every <input type="text" value="1"/> day(s) <input type="radio"/> every weekday
Starts at	<input type="text" value="29.01. 16:30"/> <small>(Your time will be: 16.07. 11:37 - Central European Summer Time)</small> <small>(Application time zone: W. Europe Standard Time)</small>
Ends	<input checked="" type="radio"/> never <input type="radio"/> After <input type="text" value="1"/> occurrences <input type="radio"/> on <input type="text" value="16.07. 11:37"/>
<input type="button" value="i"/> Occurs every day valid from 29.01. 16:30	

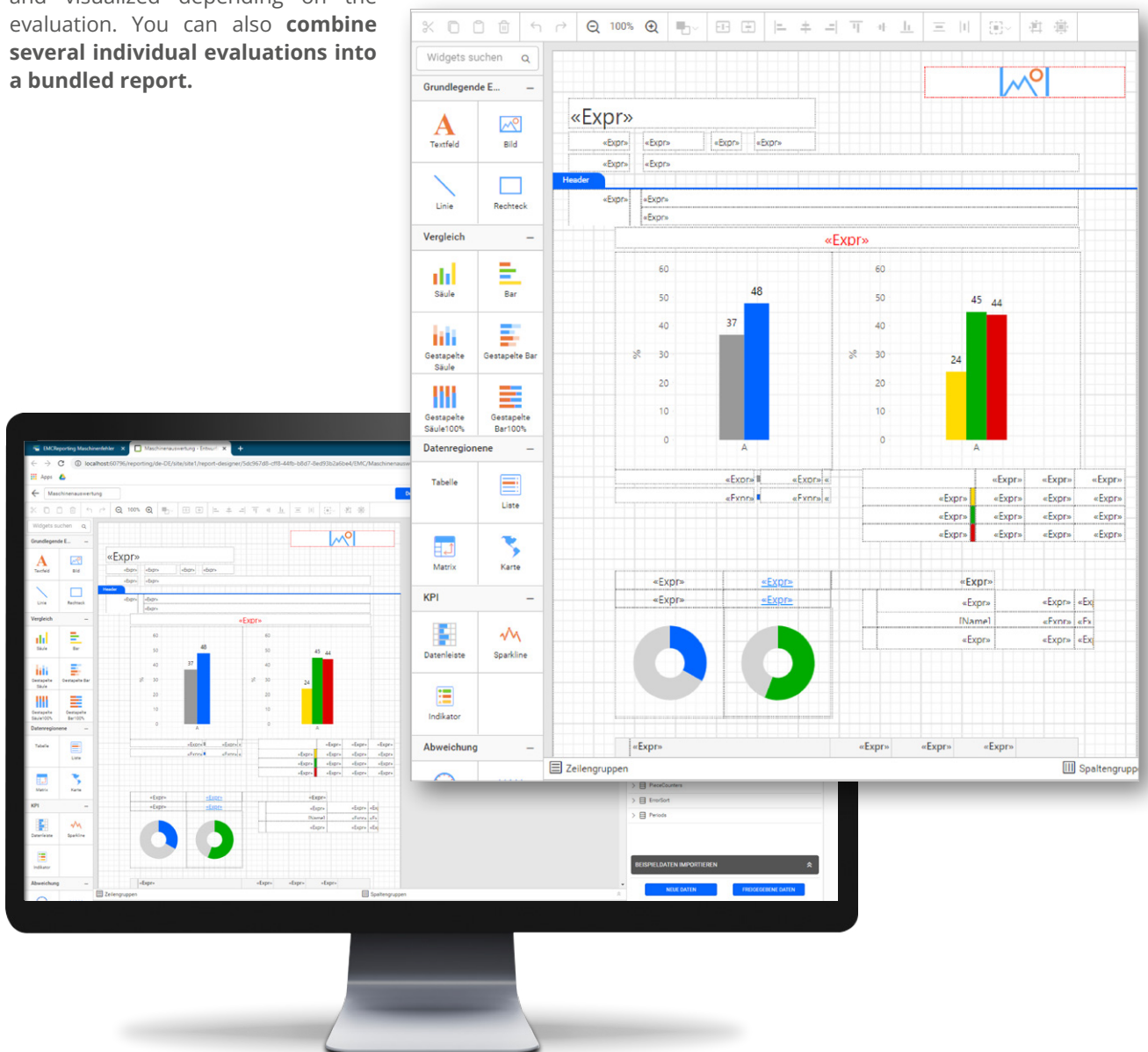
## Selection of format and recipients

In addition to the **desired format of the report, individual recipients or entire recipient groups** can be specified to whom the reports are to be sent.

Format	<input checked="" type="radio"/> PDF	<input type="radio"/> Excel	<input type="radio"/> Word	<input type="radio"/> HTML	<input type="radio"/> PPT	<input type="radio"/> CSV	<input type="radio"/> XML
<input checked="" type="checkbox"/> E-mail attachment <input type="checkbox"/> Save as file <input type="checkbox"/> FTP Location Export							
Host	<input type="text" value="Host"/>	User name	<input type="text" value="User name"/>	Password	<input type="password" value="....."/>		
Select Recipients							
<input type="text" value="Choose user"/>	<input type="text" value="Choose group"/>	<input type="text" value="External recipient (E-mail address)"/>					
<input type="text" value="eddy.huynh@ite-ms.de"/>							

# Creation of individually customized reports

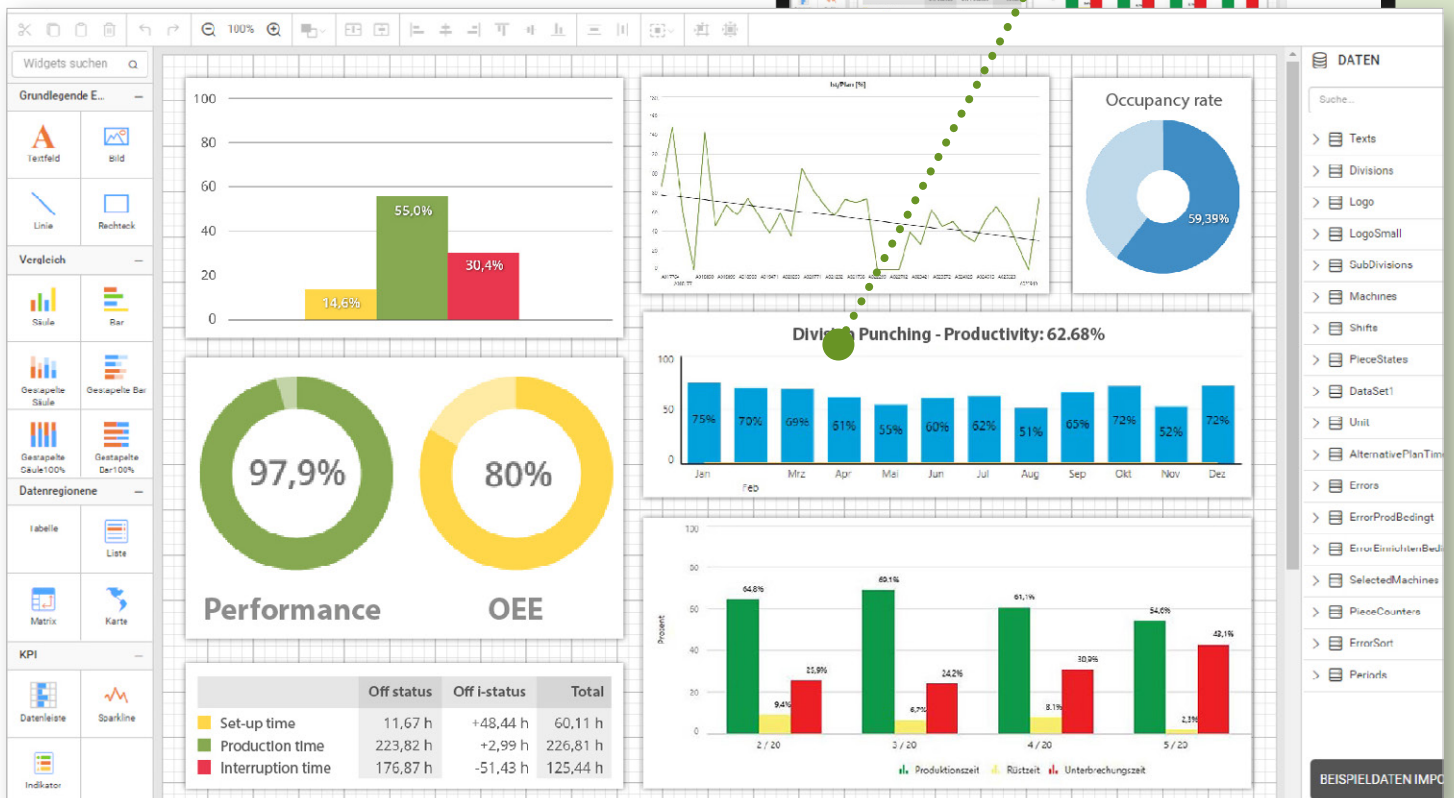
With the report server, you can **easily design, compile and edit each report individually using the modular principle**. A variety of templates, graphics, diagrams and tables can be selected, defined and visualized depending on the evaluation. You can also **combine several individual evaluations into a bundled report**.



## Report elements

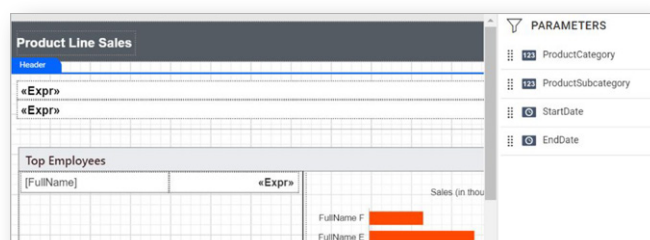
Create and visualize **meaningful key figures** from your data with a **variety of report elements**:

- **Basic elements:** text field, image, line and rectangle
- **Data area elements:** table, matrix (pivot table) and list
- **Data visualization:** charts, sparklines, data bars, gauges, indicators and maps
- **Sub-reports**
- **Customized report elements:** Barcodes, QR barcodes and more



## Report parameters

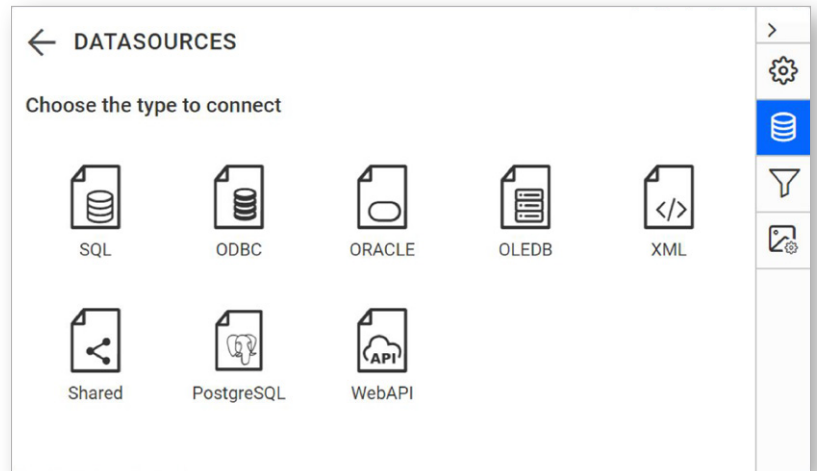
Users can make **interactive dynamic entries** at runtime in order to influence the data evaluation.



## Connection to any data source

Read data from a **variety of data sources in local or server databases:**

- **Built-in data sources:** Microsoft SQL Server, Microsoft SQL Azure, Oracle, OLEDB, ODBC, Web API, OData, JSON, XML.
- **Business object data sources:** JSON.
- **Databases:** SASS, MySQL, PostgreSQL, and more.



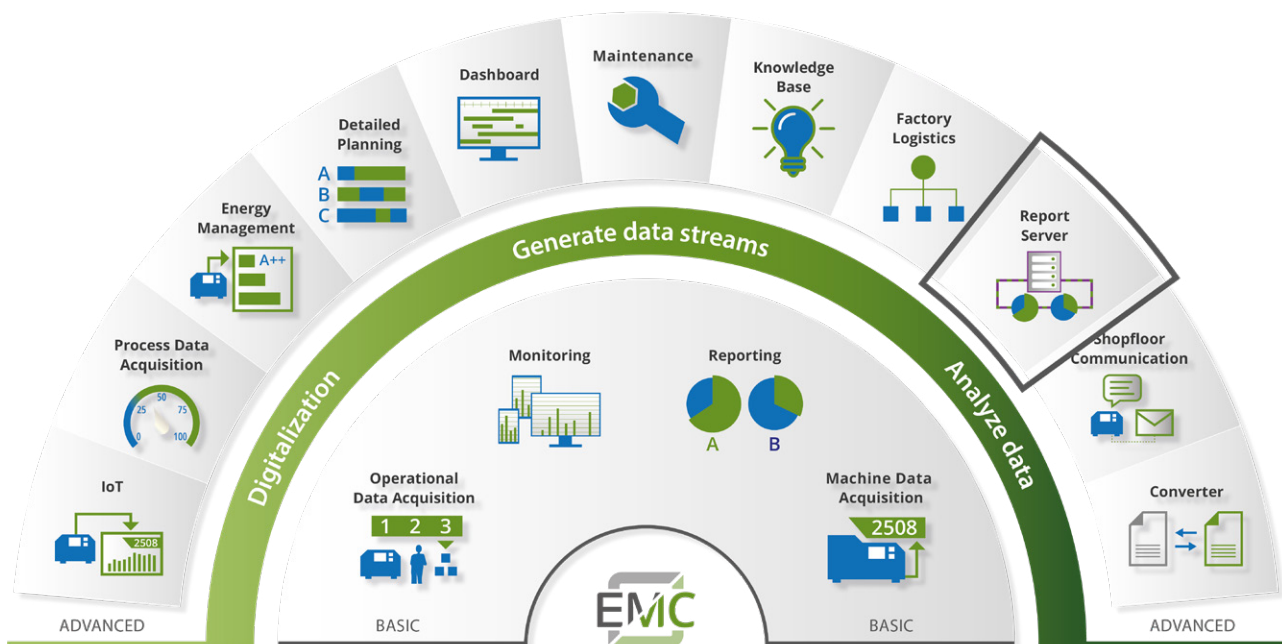


## MES-Software EMC

# The solution for your smart networked manufacturing

Our user-friendly MES Software EMC controls all digital processes on the shopfloor **from planning, implementation, maintenance to traceability, shipping, production orders and a sustainable evaluation.**

It adapts completely to your needs, integrates into your existing IT landscape and brings together the data streams from ERP and the shopfloor.



The modular architecture of the MES Software EMC offers you the important **freedom and flexibility** in the implementation of your future-oriented production. Together with the **central MES database**, it is the basis for a **customer-oriented implementation - step-by-step or holistically - individual modules or as a complete system.**

No matter which solution you choose, with EMC you are always one step ahead and have the **best possible transparency** in production. All with the aim of **increasing your efficiency.**



IT Engineering Manufacturing Solutions GmbH is your provider of a well-developed Manufacturing Execution System in production management.

As an IT and MES expert in the metal forming industry and thanks to our large network of partners and memberships in associations (including VDFI and netzwerkdraht e.V.), as well as the best contacts with machine manufacturers, we know exactly how to obtain the important data and how to use it to digitalize processes and thus increase efficiency and productivity in manufacturing.

Our MES Software EMC acts as a central information hub and, by integrating the production data, ensures integration of production data for transparent production processes, flexibility and cost efficiency.

With a high level of technical and industry competence as well as many years of experience and expertise, we accompany you personally and step by step in transforming your production into a digital factory.

**IT Engineering Manufacturing Solutions GmbH**

Jusistraße 4

D-72124 Pliezhausen

Phone +49 (0) 7127 9231-10

info@ite-ms.de

www.ite-ms.de



WE ENABLE SMART MANUFACTURING