



EMC.OrderManagement

Manage all production orders clearly and easily

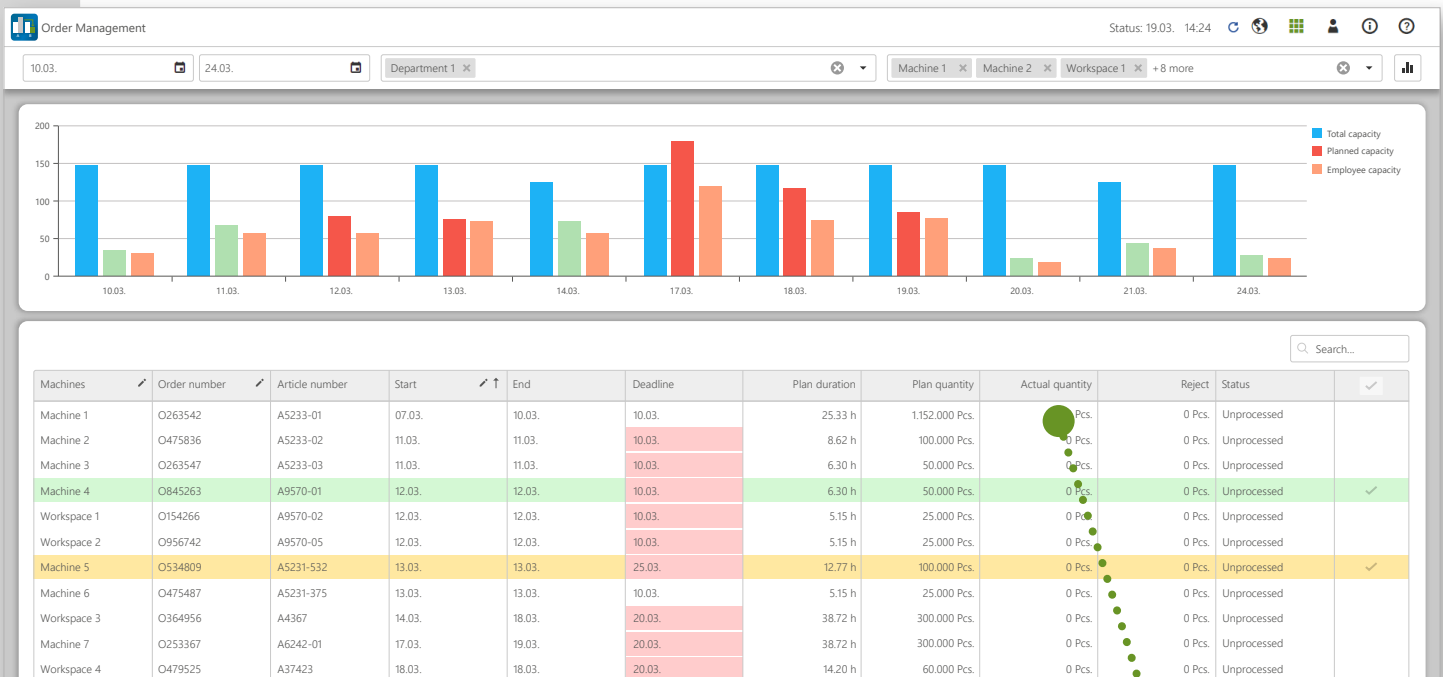
With the **EMC.OrderManagement** module, you can **plan, control and monitor all orders in real time**. The module **takes the orders roughly planned by the ERP** with infinite capacity and makes it possible to control them in such a way that **overcapacity can be easily eliminated by quickly shifting orders**. This enables **better planning and utilization of the machines** as well as less idle time. In addition, the order control system **determines always the ideal planned sequence of orders** at the terminal. The employee always receives the correct order in which the orders are to be processed.

EMC.OrderManagement

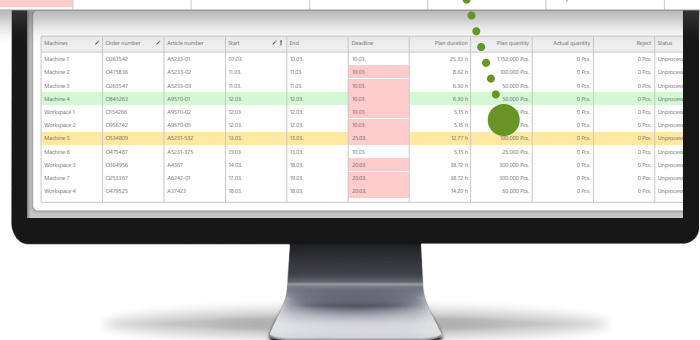
Efficient control of machine and department capacity utilization



With the **EMC.OrderManagement** module, the **machine and employee capacities of the department** and the **list of production orders per machine** are displayed in real time based on the selected filters. Thanks to **real-time monitoring**, you always have a **complete overview of machine and department utilization** and can intervene directly if necessary.



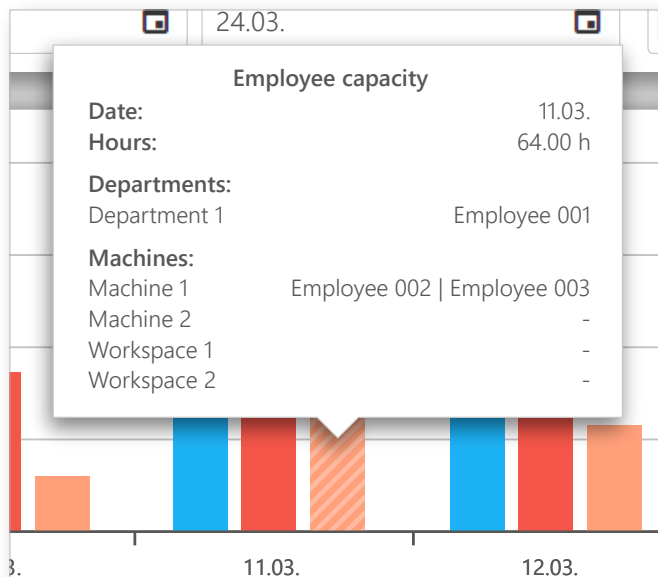
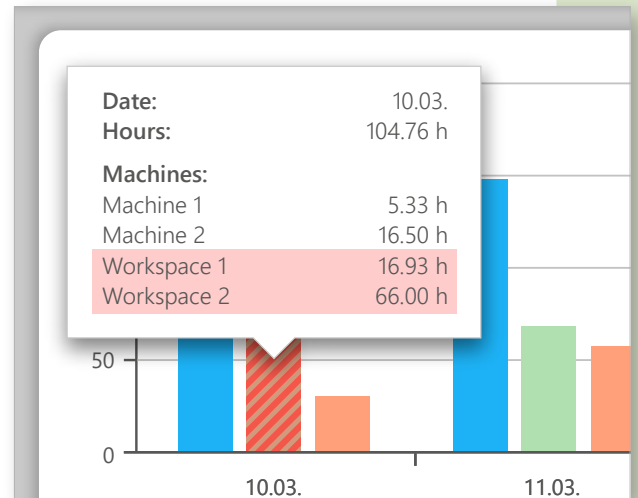
New or changed orders are called up directly from the ERP in a roughly planned manner and displayed in color. The supervisor can then control and plan the orders in such a way that overcapacity is avoided.



Capacity of the department

The blue bar always shows the **possible machine working time** of the selected department.

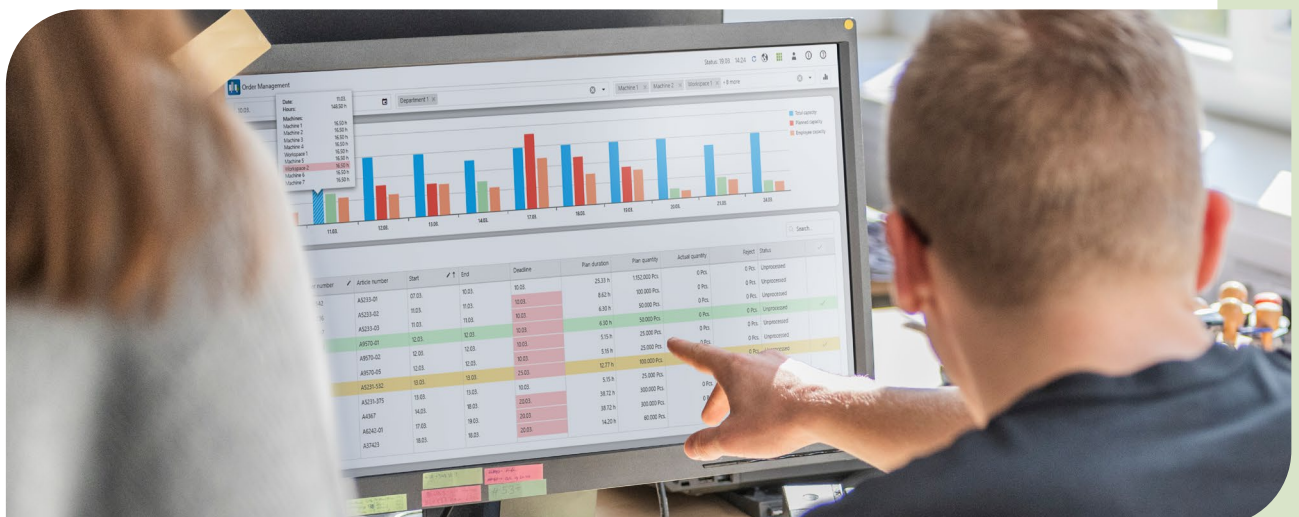
The second bar shows the **planned capacity and utilization of the department** in detail. Overloaded machines or workstations are automatically highlighted in color.



Employee capacities

Which employees are scheduled for the machines or the department? In combination with the **EMC. TeamPlanner module**, the employee capacities are displayed via a third bar.

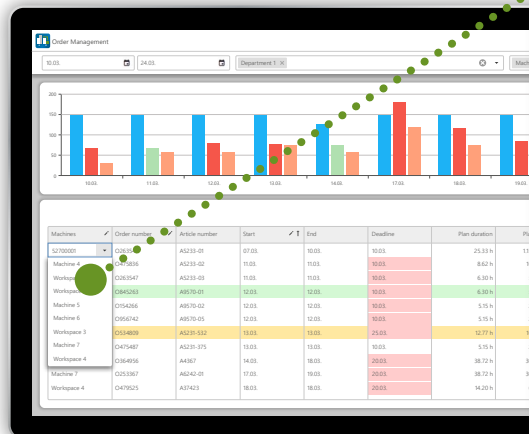
This allows the supervisor to see immediately if he **needs to schedule more people for the orders**.



Assign orders to a new machine

The digital order management system offers several options for moving orders if required.

The **order can be easily moved to a new machine** using the machine name. To do this, **simply select the new machine and move the order.**

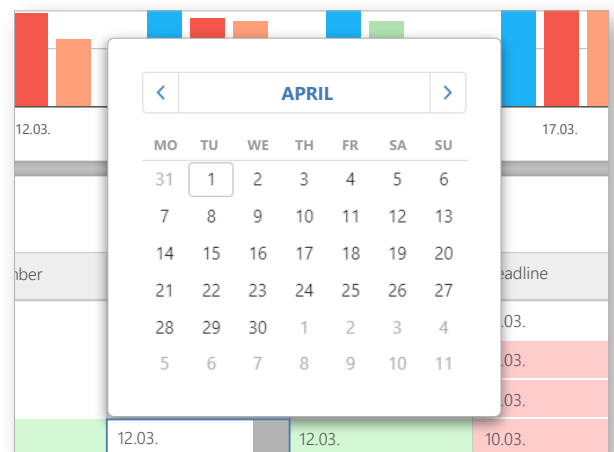


Machines	Order number
52700001	O263542
Machine 4	O475836
Workspace 1	O263547
Workspace 2	O845263
Machine 5	O154266
Machine 6	O956742
Workspace 3	O534809
Machine 7	O475487
Workspace 4	O364956
Machine 7	O253367

Simply move the start date of orders

In addition to assigning an order to a new machine, **orders can also be rescheduled.** If there are capacity bottlenecks, the **start date of the orders can be postponed via the calendar.**

Regardless of which type of order postponement the foreman chooses, thanks to digital networking, **the worker is always shown the correct planning sequence of the orders on the machine terminal.**

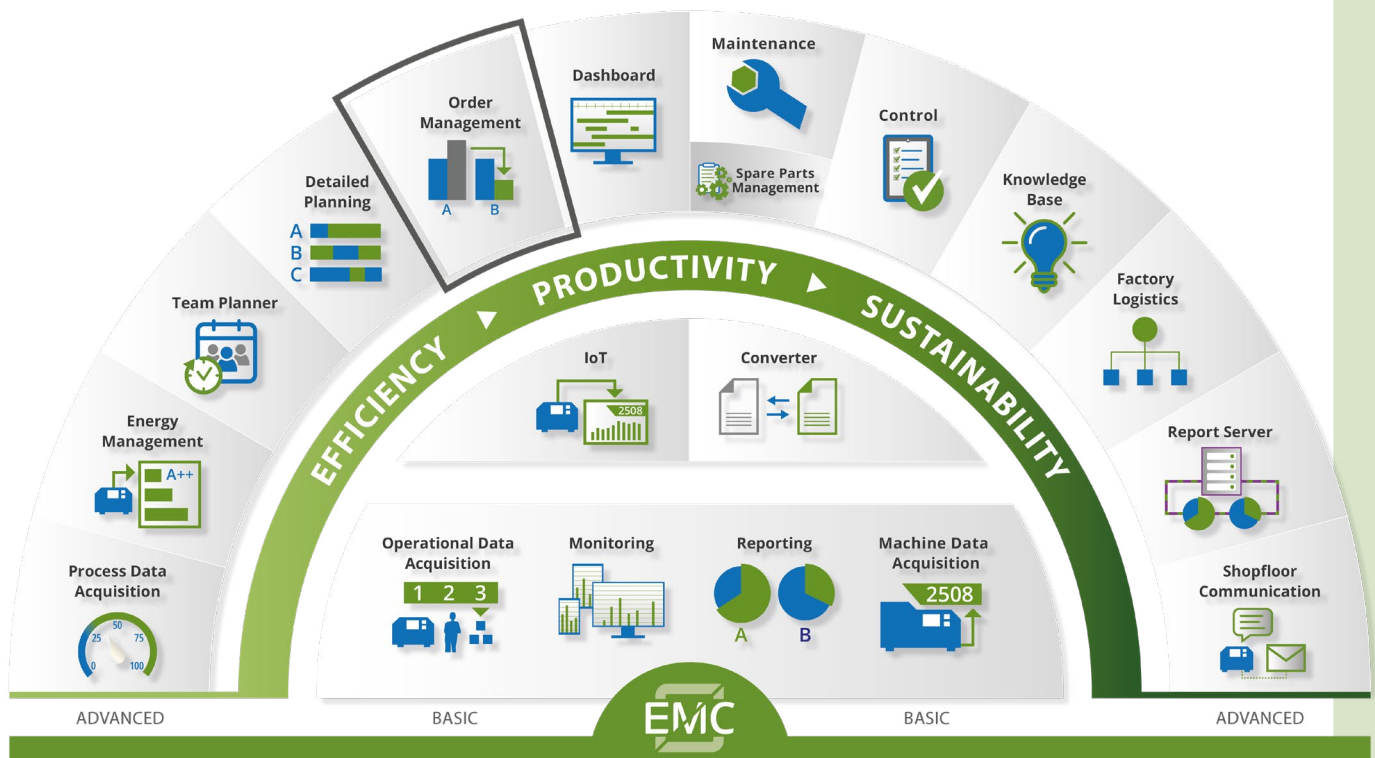


MES Software EMC

The solution for your smart networked manufacturing

Our user-friendly MES Software EMC controls all digital processes on the shopfloor **from planning, implementation, maintenance to traceability, shipping, production orders and a sustainable evaluation.**

It adapts completely to your needs, integrates into your existing IT landscape and brings together the data streams from ERP and the shopfloor.



The modular architecture of the MES Software EMC offers you the important **freedom and flexibility** in the implementation of your future-oriented production. Together with the **central MES database**, it is the basis for a **customer-oriented implementation - step-by-step or holistically - individual modules or as a complete system.**

No matter which solution you choose, with EMC you are always one step ahead and have the **best possible transparency** in production. All with the aim of **increasing your efficiency.**



iT Engineering Manufacturing Solutions GmbH is your provider of a well-developed Manufacturing Execution System in production management.

As an IT and MES expert in the metal forming industry and thanks to our large network of partners and memberships in associations (including VDFI and netzwerkdraht e.V.), as well as the best contacts with machine manufacturers, we know exactly how to obtain the important data and how to use it to digitalize processes and thus increase efficiency and productivity in manufacturing.

Our MES Software EMC acts as a central information hub and, by integrating the production data, ensures integration of production data for transparent production processes, flexibility and cost efficiency.

With a high level of technical and industry competence as well as many years of experience and expertise, we accompany you personally and step by step in transforming your production into a digital factory.

iT Engineering Manufacturing Solutions GmbH

Jusistraße 4

D-72124 Pliezhausen

Phone +49 (0) 7127 9231-10

info@ite-ms.de

www.ite-ms.de



WE ENABLE SMART MANUFACTURING